

2020 Annual Report

Epilepsy Foundation of Minnesota

Dear Friend,

We all know that 2020 was a different kind of year. We had hundreds of conversations with our epilepsy community — from people participating in our programs and services like Camp Oz, Seizure Smart Schools, or Connect Groups, to supporters and researchers, to partner organizations to meet the needs of our community. These conversations reinforced, time and again, how important our mission was. Our job is to connect and empower people facing the challenges of living with epilepsy.

Thank you for your involvement with us and the support you give to the epilepsy community. In this report you will see how EFMN pivoted to provide programs and services in a virtual setting.

Sincerely,



Glen Lloyd
Executive Director



Patrick Burns
President, Board of Directors

2020 Financial Summary

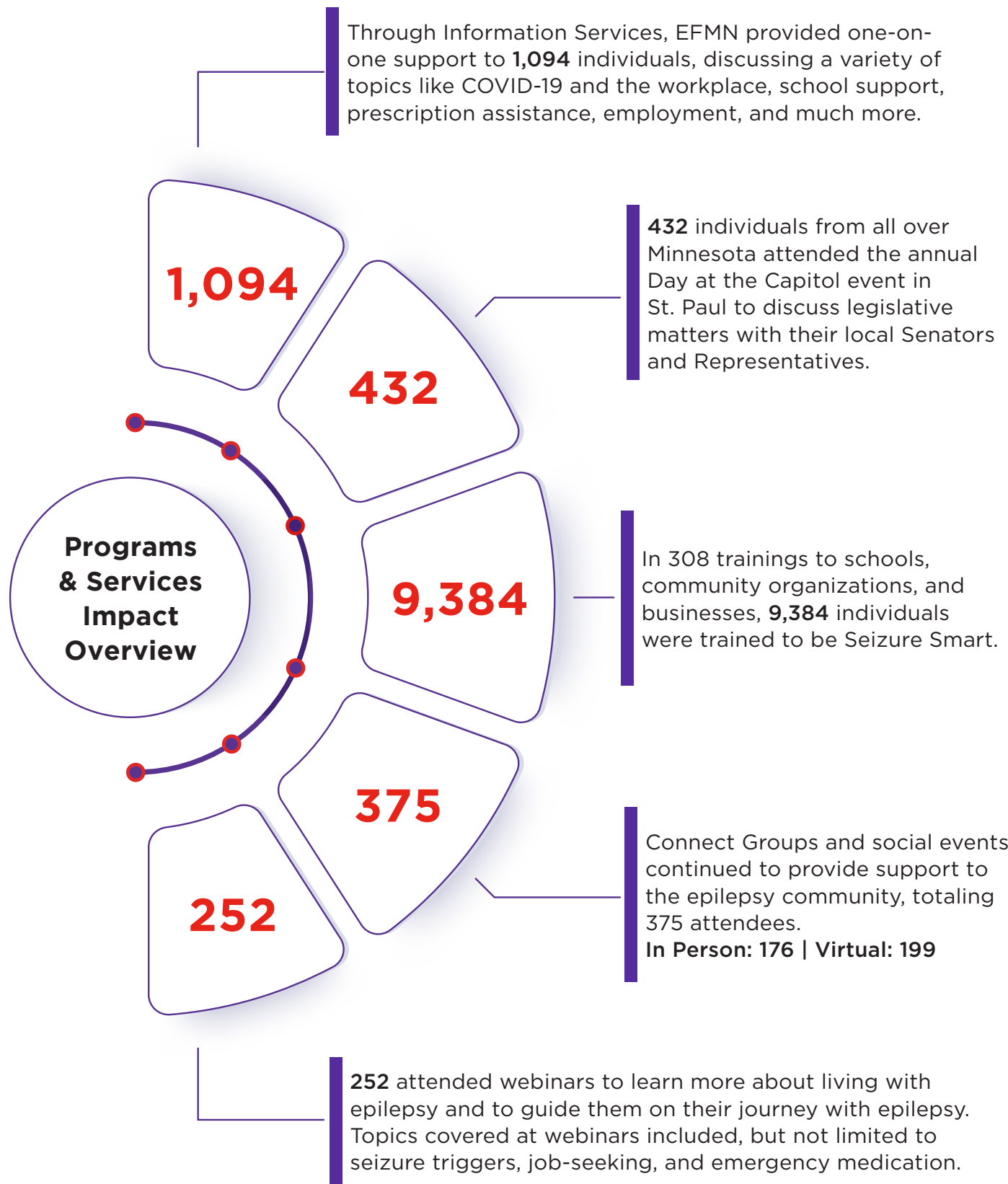
Statement of Activities Year Ending December 31, 2020

Revenue	2020	2019
Individuals, Foundations, and Corporations	619,406	841,175
Special Events, net	183,753	342,374
Paycheck Protection Program income	333,000	-
Investments	204,262	338,926
Donated Goods, net income	353,537	1,203,579
TOTAL REVENUE	1,700,684	2,761,254
Expenses		
Programs that Educate	412,079	497,512
Programs that Connect	489,884	963,367
Programs that Empower	268,685	212,158
Fundraising	319,132	324,242
Management and Administration	231,528	232,982
TOTAL EXPENSE	1,721,308	2,230,261
Total Change in Net Assets	(20,624)	530,993

Statement of Financial Position Year Ending December 31, 2020

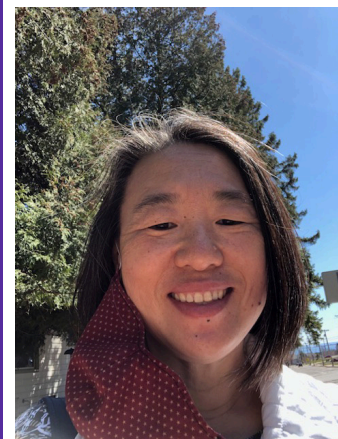
	2020 Total	2019 Total
Cash and Cash Equivalents	1,123,781	1,236,369
Receivables	252,939	352,896
Prepaid Expenses	124,495	122,508
Investments	2,942,668	2,739,381
Property and Equipment, net investments	99,997	157,644
Total Assets	4,543,880	4,608,798
Total Liabilities	196,912	241,206
Unrestricted Net Assets:		
Undesignated	2,111,876	1,747,460
Board Designated	2,083,454	2,137,447
Property & Equipment, net investment	99,997	157,644
Donor Restricted Net Assets	51,641	325,041
Total Liabilities & Net Assets	4,543,880	4,608,798

Amidst the change in the world, EFMN provided needed services and support to the epilepsy community. We remain the leading advocacy and support organization in Minnesota.



"Returning to Connect Groups last fall was incredible. I didn't realize I had this emptiness in my soul. It was like tasting ice water after being dehydrated for days. Connect Groups are exactly that — connecting with others living with epilepsy. We don't have to explain our medical diagnosis or do seizure first aid education. We all get it and are safe to be ourselves. The Stay at Home Order has been tough on everyone. However, living with epilepsy is like being invisible. Unless I have a seizure or I say something, nobody would know that I have a story. The April Virtual Connect Group was fantastic. Unlike the in-person meetings, I interacted with people around the state!"

— Kyah Altieri, Connect Group Participant



From conversations with individuals and caregivers, new needs developed during the Stay at Home order during the pandemic. In response to these needs, EFMN not only checked in with a number of individuals, but created new programs and services in order to serve the epilepsy community.

509

Individuals contacted in May 2020 to check in after the Stay at Home order was placed.

380

Shining Star Households contacted in August and September 2020 to check in and discuss family and youth needs for the upcoming school year.

25

Youth attended the Adventurous Endeavors virtual events — events created to bring kids together throughout the year due to the cancellation of Camp Oz.

29

Adults and youth joined EFMN and Adler Graduate School for a 4-week art therapy series.