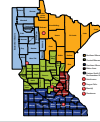


MINNESOTA Epilepsy

WWW.EFMN.ORG



6 Epilepsy in the News



8 2011 Seizure Smart Communities



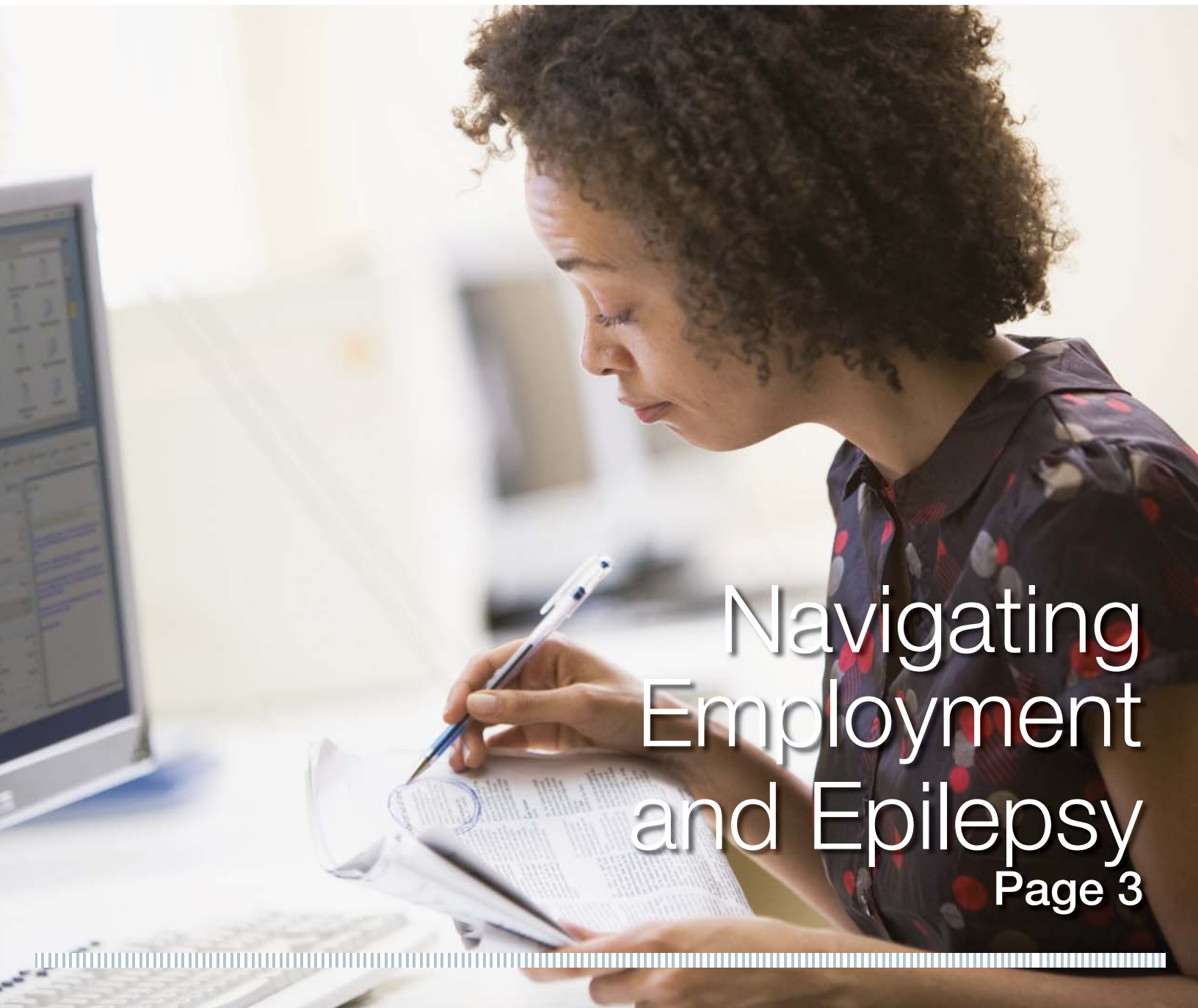
10 Using Technology to Reach More People



12 Midwest Seizure Smart Fall Conference

A QUARTERLY PUBLICATION OF THE EPILEPSY FOUNDATION OF MINNESOTA

FALL 2011



Navigating
Employment
and Epilepsy
Page 3

**“EFM leads
the fight to
stop seizures,
find a cure and
overcome the
challenges created
by epilepsy.”**

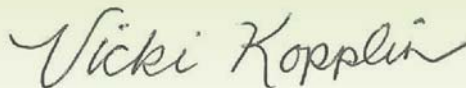
Vicki Kopplin

Over three million Americans live with epilepsy – 60,000 of those people are right here in our community. They face the challenge of seizures interrupting their daily lives: impacting the ability to drive a car, making employment a challenge and facing the unknowns associated with epilepsy. EFM leads the fight to stop seizures, find a cure and overcome the challenges created by epilepsy.

On November 5th EFM will host a “Research Summit” - the first-ever in Minnesota - that showcases epilepsy research being conducted right here in Minnesota. Watch our website for highlights from the summit!

In this newsletter you’ll get tips about employment and epilepsy, read the latest in epilepsy news and find out more about how our programs and services can work for you. We heard many inspiring stories at Stroll 2011 and I thank all of you who helped us raise over \$260,000 to support people in our community who live with seizures.

EFM is the place to get connected to others living with seizures, hear the latest epilepsy news and feel empowered by getting involved. I’m always glad to hear from you, and can be reached at vkopplin@efmn.org or 651.287.2314.



Vicki Kopplin
Executive Director

THE EPILEPSY FOUNDATION OF MINNESOTA

is a nonprofit organization and one of fifty-five affiliates of the National Epilepsy Foundation. Serving Minnesota and Eastern North Dakota, the Foundation works to educate, connect and empower people affected by seizures.

1600 University Avenue West | Suite 300 | St. Paul, MN 55104
www.efmn.org | 800.779.0777

MISSION

The Epilepsy Foundation of Minnesota leads the fight to stop seizures, find a cure and overcome the challenges of living with epilepsy.

OFFICERS

President Ann S Kelly Jones
Past President Kevin Goodno
Vice President Brett Boyum
Treasurer Dustin LaValley, CPA
Secretary Kari Rosand Scanlon

APPOINTED MEMBERS

Jason Engkjer | Legal Counsel
Tabitha Fields
Marcus Fischer
Marija Fox
Tim Gallagher
Michael Gonzales
Donald Lassere
Joy Rohwer
Jessica Stoltenberg
Trudi Trysla
Bill Walsh

DESIGNATED MEMBERS

Tess Sierzant | PAB Chair
Nina Graves | National Board Representative
Mark Lenhardt | Central MN Representative
Sandy Wallin | Northern MN Representative
Dean Oachs | Southern MN Representative

PROFESSIONAL ADVISORY BOARD

Chair | Tess Sierzant, MS, APRN, BC, CNRN | Saint Joseph’s Hospital
Aviva Abosch, MD | University of Minnesota
Anne Barnwell, CBIS, CPRP
Jeannine Conway, PharmD, BCPS | University of Minnesota
Lizbeth dePadua, MD | MINCEP Epilepsy Care
Armantina Espinosa, MD | Minneapolis Clinic of Neurology
Timothy Feyma, MD | Gillette Children’s Specialty Healthcare
Miguel Fiol, MD | Fairview-University Epilepsy Care Center
Nina Graves, PharmD | Medtronic
Douglas Heck, PhD | Duluth Psychological Clinic, Inc
Thomas Henry, MD | University of Minnesota
Ilo Leppik, MD | MINCEP Epilepsy Care
Donna McKenny, PHN, LSN, MEd | Centennial Schools
Kathleen Rieke, MD | CentraCare Health System
Patricia Penovich, MD | Minnesota Epilepsy Group
Frank Ritter, MD | Minnesota Epilepsy Group
Joanne Rogin, MD | Midwest Center for Seizure Disorders
Elson So, MD | Division of Epilepsy, Mayo Clinic
Teresa Tran, MD | Park Nicollet

Clinicians Corner

Epilepsy and Employment

by Anne Barnwell, PAB member



Do you know someone with epilepsy who has lost a job or been unemployed sometime in the past three years? If so, you are not alone. Long term research has shown that employment for individuals with epilepsy is consistently characterized by greater unemployment and underemployment than the general population. In fact, the Epilepsy Foundation of America cites the rate of unemployment for people with epilepsy as twice the national norm. This outcome is not based on a single factor, but a combination of challenges that individuals with epilepsy face on a regular basis.

Some known factors related to employment difficulties are easily predicted – ongoing seizures, early age of onset, neurological deficits, number and side effects of medications, and additional challenges such as anxiety or depression. This analysis seems fatalistic, as if individuals with complex medical conditions are destined to be unemployed. It doesn't need to be this way. New research indicates that the most important factor in obtaining and maintaining employment for people with epilepsy is access to employment services; not symptoms or severity, not lack of education. In a 2005 article

from the Journal of Vocational Rehabilitation, individuals with epilepsy who had access to vocational services were 27 times more likely to get and keep a job than those who didn't.

In Minnesota public employment services are offered through the Minnesota Workforce Centers and the state Vocational Rehabilitation Services (VR) program. Workforce Centers offer general training in job seeking skills. VR services include vocational assessment and evaluation, vocational training and education, job placement and follow up, and extended employment support for people with disabilities. Vocational rehabilitation services are separate from the Medical Assistance waiver system which can also fund long term employment and pre-employment supports to people with cognitive disabilities or traumatic brain injury.

Epilepsy is one of the most frequently diagnosed chronic neurological disorders in the United States, yet when polled, counselors say they have few individuals with epilepsy on their caseloads. How can this be? To receive services through the Minnesota VR system, applicants need to be candid about the barriers they face in their daily lives. Many

Continued on page 11

EFM in Action

Stroll 2011

Stroll 2011 was our biggest fundraising success to date, with over \$260,000 raised to support EFM's programs and services. Many teams lifted up people with epilepsy with encouraging signage & t-shirts, sharing stories and walking together. Stroll photos can be found under the QUICK LINKS section on our homepage. A list of top-fundraising teams, as well as teams that won Spirit Awards, is also available at efmn.org. Thanks again to all who strolled with us!



Thanks to the following Stroll 2011 sponsors: Team Epilepsy, Upsher-Smith, Essentia Health, Blue Cross Blue Shield, CentraCare Clinic – Neurology and Dakota Medical Foundation.

EFM in Action

Community Events and Education

State Fair

EFM raised epilepsy awareness at the Minnesota State Fair for 12 days, with seizure trivia and educational materials for fairgoers.



Summer conference

Our Midwest SEIZURE SMART Summer Conference drew nearly 200 participants to Duluth! Speaker presentations are available for download on efmn.org. Join us on October 15 in Bloomington for our fall conference.

Epilepsy in the News



NEW PODCAST ABOUT EPILEPSY

Listen to an informative podcast from **Ilo Leppik, M.D., Director, Epilepsy Research and Education Program at the University of Minnesota** on generic medications and the brittle epilepsy patient. Leppik enlightens listeners about the importance of knowing your medication's manufacturer, what defines brittle epilepsy and more. Visit www.efmn.org under the LOCAL NEWS & INFORMATION section to hear the podcast.

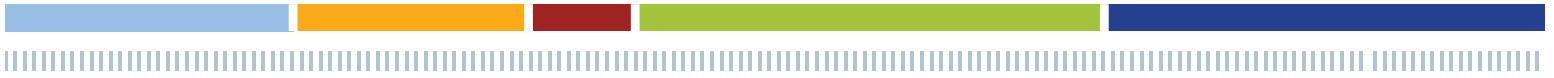
POSSIBLE EPILEPSY TRIGGER POINT IDENTIFIED - STANFORD RESEARCHERS FIND DEFECT THAT SETS OFF COMMON CHILDHOOD SEIZURES

Excerpted from Palo Alto Online News (August 23, 2011)

A brain-circuit defect that triggers the most common form of childhood epilepsy has been identified by Stanford University School of Medicine researchers.

The researchers showed for the first time how defective signaling between two key brain areas -- the cerebral cortex and the thalamus -- can produce in mice the brief loss of consciousness and brain oscillations that characterize so-called absence seizures in children, according to a study published Aug. 21 online in *Nature Neuroscience*.

Young patients can spontaneously experience these seizures up to hundreds of times per day. The new findings could lead to a better understanding of how ordinary, waking, sensory experiences can ignite seizures, said the study's senior author, John Huguenard, a professor of neurology, neurological sciences and molecular and cellular physiology.



U OF M RESEARCHERS USE IMPROVED IMAGING TECHNIQUE; DISCOVER A BETTER APPROACH TO DIAGNOSING EPILEPSY

Excerpted from Health & Medicine (August 1, 2011)

Using state-of-the-art, 7 Tesla magnetic resonance imaging (MRI) technology, University of Minnesota Medical School researchers may have uncovered a better approach to diagnosing epilepsy. In the process, the team was able to cure eight patients of all epileptic symptoms.

Epilepsy, a neurological disorder causing repeated seizures or convulsions, impacts about one percent of the population, according to the National Institutes of Health (NIH). The most common type of epilepsy is temporal lobe epilepsy, caused by scarring inside the hippocampus, a major memory center of the brain. Many of these patients have severe memory problems, even in between seizures.

Using 7 Tesla MRI technology, a U of M research team led by University of Minnesota Physician neurologist Dr. Thomas Henry, scanned epileptic patients to capture extremely detailed images of their brain. (The strength of a magnetic field is measured in Tesla units. The higher the field strength, the more detailed the image acquired by MRI machines.)... the improved 7 Tesla technology allowed researchers to make highly-improved, detailed images of patients' brain tissue, especially the portion responsible for causing epilepsy.

Shining Stars Program

BACK TO SCHOOL TIPS FOR SHINING STARS

As the school year begins, it's time to think about how your child's school responds to a seizure. There is much more than the physical response to a seizure to ensure a child's safety. Response may also include training staff, educating students and doing what's necessary for the students affected by epilepsy to flourish in school.

There are many different ways for parents to support their kids in school. The first step is to disclose your child's seizures to the appropriate school personnel. This will ensure that if a seizure occurs at school there is a plan in place, and it also actively involves parents in the planning process. The more information you share about your child's epilepsy (e.g. a seizure action plan or a seizure observation record), the more your child can feel comfortable at school.

Step two is to open a conversation with both staff and students. The Epilepsy Foundation of Minnesota can assist with this conversation through training, classroom kits and other Seizure Smart School program resources.

Bullying is an issue in schools across the U.S. and youth with epilepsy are no exception. Through education and awareness of seizures, we can reduce bullying. October is "National Bullying Awareness Month" and EFM is partnering with PACER Center to get bullying information out to parents, youth and schools. (see page 12)

Back to school is a perfect time to set the parameters for what your child deserves when it comes to his/her school experience. Consider EFM as your resource for back to school and contact Nikki Baker at nbaker@efmn.org or 651.287.2308 for more information.

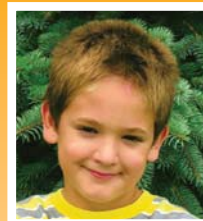
SHINING STARS, CHECK OUT OUR NEW WEB PAGES!

We're working to make the Shining Stars part of our website FUN for youth of all ages. We're adding games, activities and more! Stay tuned for future enhancements like a message board, quizzes and fun ways to connect.



**A PROGRAM OF THE
EPILEPSY FOUNDATION OF MINNESOTA
CELEBRATING CHILDREN WITH SEIZURES**

All kids are special, but we think kids with epilepsy are shining stars! At the Epilepsy Foundation of Minnesota, we celebrate kids with epilepsy by making them Shining Stars. The program is FREE and open to kids of all ages with epilepsy.



*Please call us for a brochure at
651.287.2310 or
register online at **www.efmn.org***

EFM + Technology = Reaching More People!



Technology is helping us serve and reach more people; we thought you'd like to know more about what we're doing.

OUR WEBSITE

www.efmn.org is growing! Since fall 2010, unique visitors to our website have grown from 3,000 to nearly 5,000. People are using our content too: page views have increased by 10,000 since fall 2010. We've added a national news feed to our homepage, a live chat feature and more ways to deliver the most current information about epilepsy to our online community.

SOCIAL MEDIA

On Facebook and Twitter, users share stories, get breaking news and ask each other questions. EFM actively manages both spaces and has seen significant growth in the people we touch via social media. Facebook friends have grown by 800 since fall 2010. We're up to nearly 400 Twitter followers, from 100 last fall. Social media is yet another way for us to share epilepsy news and raise awareness.

NEW ONLINE ACCESS TO SUPPORT GROUPS COMING THIS FALL

Help us pilot new technology for our support groups! We're adding online access to our support groups in a pilot program this fall (meetings on October 6 and November 3). What does this mean?

- Transportation is not a barrier. If you don't have transportation to a meeting or live far from a meeting location, all you need is a computer or phone line to join the discussion.
- Increased confidentiality. Would you like to remain anonymous in a support group? No problem! Log in to the meeting online and join the group anonymously. Only people who RSVP to the meetings will be given a unique access code, ensuring privacy for all participants.
- Talk to others in a comfortable setting. You can join our meeting while in your pajamas in the comfort of your own home!

If you're interested in joining our October 6 and November 3 Adult Connect meetings online, contact Stephanie Kolari at skolari@efmn.org or 651.287.2312.

More on Navigating Employment & Epilepsy

The New ADAAA – Making Accommodations for Employees with Disabilities

By Brenda Johnson, SPHR Human Resource Research Generalist at Trusight, Inc.

On March 25, 2011, the US Equal Employment Opportunity Commission (EEOC) issued final regulations implementing the ADA Amendment Act of 2008. It is available online at http://www.eeoc.gov/laws/statutes/adaaa_info.cfm. The ADAAA broadens the definition of disability and shifts the focus from whether an individual is disabled to whether discrimination and reasonable accommodation occurred.

Identifying and implementing reasonable accommodations includes a number of steps, often referred to as the interactive process. For example, what if an employee or applicant asks for an accommodation because the individual has epilepsy or some other seizure disorder? What would be your next step?

Once the need for an accommodation is recognized, the next step in the interactive process is gathering information about the limitation and the problem it is causing on the job. Stephanie Kolari, a program manager at the Epilepsy Foundation of Minnesota, cautions employers not to make decisions based on generalizations, “No two people have the same type of seizures and issues. Each person needs to be looked at as an individual case.” Every request for an

accommodation should be examined and considered on its own merits. If the disability and need for accommodation are not obvious, medical documentation can be requested from the individual’s health care provider to determine if the individual has a disability and needs an accommodation.

Once the limitations of the disability are understood, it is time to explore accommodation options. This phase of the process may involve brainstorming and more data gathering. Fortunately, there are a number of good resources to aid in this process. The individual requesting assistance is often the best source of information about their disability and the problems being encountered on the job. The Job Accommodation Network (JAN), a service provided by the US Department of Labor’s Office of Disability Employment Policy (www.askjan.org), offers a wealth of information on many types of disabilities. Information can also be found on the EEOC website, <http://www.eeoc.gov/laws/types/disability.cfm>. Evaluate each of the options for reasonableness and effectiveness and once an accommodation has been selected and implemented, make sure to monitor its effectiveness.

EDITOR’S NOTE: TruSight Inc.’s Plymouth-based headquarters hosted artwork from EFM’s BRAINSTORMS collection from May through August 2011.

Continued from page 3

people with epilepsy are denied services because they define epilepsy as having seizures and decline to reveal other aspects of their disability.

Minnesota’s VR program is currently limited to opening new cases for people with highest need, defined as people who have three or more functional limitations. If you are applying for services you should consider whether you have challenges in learning, memory, relationships with others, social isolation, expressive or receptive communication, job loss related to epilepsy or have ever needed time off related to seizures. All of these challenges are considered functional limitations and will help you be considered eligible for services. Without your willingness

to consider the whole picture, you may be locking yourself out of the most important path to employment stability – the training and support provided by the Minnesota Vocational Rehabilitation Services program.

The Epilepsy Foundation of Minnesota’s Information and Referral program can assist you with employment issues. Information includes rights of those with epilepsy within the workplace as well as referrals to various employment programs (including Vocational Rehabilitation Services). Additionally, depending on your location, EFM is able to provide Seizure Recognition and Response presentations to educate employers and staff. Contact Genna Maxwell for more information at 651.287.2303 or gmaxwell@efmn.org.

Spotlight on Education



Midwest Seizure Smart Conference
Saturday, October 15, 2011 from 9 a.m. to 5 p.m.
Sofitel Minneapolis
5601 West 78th Street, Bloomington, MN

Keynote Sessions:

- Sleep & Epilepsy
- Sudden Unexplained Death in Epilepsy (SUDEP)
- Update on Current Epilepsy Research

Breakout Sessions Include:

- Depression & Behavior in Children
- Transitions for Teens
- Memory
- Vascular Disease & Epilepsy
- Medication Interactions
- Epilepsy and Aging

Registration \$40 / person – includes continental breakfast & lunch, parking and conference materials. Financial Assistance is available by calling 651-287-2310. Five CEUs are available for school nurses and other healthcare professionals.

Keynote Speaker:

Nancy Foldvary-Schafer, DO
Director of the Cleveland Clinic Sleep Disorders Center

Featured Epilepsy Experts from:

- CentraCare Clinic
- Gillette Children's Specialty Health Care
- Mayo Clinic
- MINCEP Epilepsy Care
- Minnesota Epilepsy Group
- University of Minnesota

THANKS TO OUR GOLD SPONSORS



EFM PARTNERS WITH PACER FOR FREE EDUCATION WORKSHOP

Epilepsy and the IEP: Understanding the IDEA's Requirements and Development of the IEP

**Tuesday, November 8 from 6:30 – 9:30 p.m.
at PACER Center**

This Individualized Education Program (IEP) workshop explores new IEP requirements and components of IEP development, including evaluation, resolving disagreements and an expanded section on writing measurable goals (with an emphasis on students affected by epilepsy).

In collaboration with the Epilepsy Foundation of Minnesota, PACER Center is offering this free workshop for parents of children with disabilities and for professionals on Tuesday, November 8, 2011, from 6:30 to 9:30 p.m., at PACER Center, 8161 Normandale Boulevard, Minneapolis, MN.

Participants will learn about:

- Understanding parental rights and responsibilities
- Building a foundation for the Individualized Education Program (IEP)
- Involving the IEP team
- Developing the IEP
- Meeting educational standards
- Resolving differences

Advance registration is requested. To register, call PACER at 952.838.9000. In Greater Minnesota, call 800.537.2237 (toll free) or visit www.PACER.org.

Thanks for Your Support

Honorariums

Marion Clignet
Alynn Kakuk

Hilde Gasiorowich
Nancy Strauss

Sandra Mandel
Nancy Strauss

Mike Mielenhausen
Denise Hinton

Paige
Nancy Strauss

Peter Swanson
Denise Hinton

Roberta Radford
Morgan Radford

Jeffrey Thompson
Alicia Koehler

Memorials

Rick Carlson
Paulette Carlson

Drew and McKenna
Randall Olson
Roxanne Frolik
Tracee Dunnum
Samantha Stoneburg

Janelle Thein
Jason Breyer
James Ondov
Joni Canney
Sylvia Frolik
Amy Burkholder
Beth Norcia
Jolene Metty
Janice Dold

Tim Dwight
Marian Johnson

Madeline Hamermesh
Nancy Strauss

Tony King
Shirley Poliquin

Jake Knapp
Jennifer Jensen
David and Janet Tschida

Chad Onischuk
Rose Onischuk

Isabelle Rife
Marian Johnson

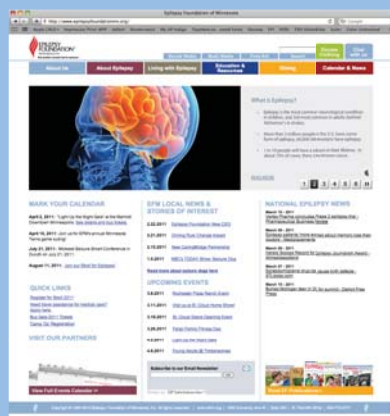
Jeffrey Schultz
Cheryl Schultz

Mathew Snyder
Audrey and Thomas Schneider



Donate Your Used Clothing to EFM!

It's easy and 100% of the proceeds from your donation fund our programs and services. Schedule your tax-deductible donation today by calling 800.779.0777 or schedule live, online RIGHT NOW at www.efmn.org.



Connect With Us!

Sign up to receive the latest news and information from the Epilepsy Foundation of Minnesota. Visit www.efmn.org today to connect with us via email.

Events Calendar

Twin Cities Area

ANNUAL SHINING STAR CELEBRATION

Saturday, October 1

11:00 AM

Science Museum of Minnesota
in the Discovery Hall room
120 W. Kellogg Blvd. St. Paul, MN

We're bringing together all Shining Stars from across the state to connect with each other and enjoy the Science Museum! This event is free to Shining Stars and their immediate family members: includes admission to museum, refreshments and a short program. RSVP by Friday, 9/16 to mbazyk@efmn.org or by calling 651.287.2310.

ADULT CONNECT MEETS THE 1ST THURSDAY OF EACH MONTH

October 6, November 3, December 1

6:30 - 8:00 PM

EFM Office
1600 University Ave. W, Suite 300
St. Paul, MN

New online option! December meeting is a holiday potluck (bring a dish to share).

WOMEN'S CONNECT Meets the 2nd Thursday of each month

October 13, November 10,
December 8
6:30 - 8:00 PM
Southdale Library
7001 York Avenue South, Edina, MN

New resources are available! Meetings may include a guest speaker on a topic related to epilepsy. Our December 8 meeting features a holiday potluck (bring a dish to share).

CREATIVE ARTS PROGRAM TALENT SHOWCASE

"Inner Voice, Inner Strength"

Sunday, November 13

2:00 - 5:00 PM

Patrick's Cabaret
3010 Minnehaha Ave. S.
Minneapolis, MN

Our third-annual Creative Arts Program talent showcase features artists affected by seizures. Enjoy BRAINSTORMS artwork on display, live musical performances, poetry readings and light refreshments. Hear inspiring stories of strength, struggle and hope from talented artists with epilepsy.

PARENT CONNECT

EAST METRO

Tuesday, November 15

7:00 - 9:00 PM

Courage Center St. Croix
1460 Curve Crest Blvd, Stillwater, MN

Kim Lewandowski from rehabilitation services at Courage Center with talk about their programs and services available to youth affected by seizures.

EPILOGUES WRITING COLLECTION

Call for Entries:

September 1 - October 31

Any person affected by seizures is invited to submit written work before October 31, 2011. Up to three entries per person, per year. Entry must be typed (12-point font) or clearly printed with a prose maximum 2,500 word count. Download an application from www.efmn.org or contact Stephanie Kolari.

BRAINSTORMS Art Collection

Call for Entries:

January 1 - April 15, 2012

Calling all artists! Anyone who has been diagnosed with a seizure disorder may submit artwork, one entry per person, to the BRAINSTORMS collection. Download an application from www.efmn.org or contact Stephanie Kolari.



Nikki Baker
Senior Program Manager
nbaker@efmn.org
651-287-2308



Amanda Van Wyhe
Program Manager Education
avanwyhe@efmn.org
651.287.2313



Stephanie Kolari
Program Manager Adult Programs
skolari@efmn.org
651.287.2312



Tammy Sammon
Program Manager
Outstate Programs
tsammon@efmn.org
651.287.2304



Amy Beecher
Outreach Coordinator
abeecher@efmn.org
701.429.1165



Sue Ringhofer
Outreach Coordinator
sringhofer@efmn.org
507.287.2103



Lori Braegelmann
Outreach Coordinator
lbraegelmann@efmn.org
320.203.9722



Mary Giese
Outreach Coordinator
mgiese@efmn.org
218.624.1330

Duluth

Doublin' the fun at Dubh Linn Thursday, October 20 6:00 – 8:30 PM

Dubh Linn Irish Pub
109 West Superior Street,
Duluth, MN

SAVE THE DATE for this fund & friend-raiser! Stay tuned for more information via email! For \$20, enjoy a night of games, live music and entertainment that will have your Irish eyes smiling!

St. Cloud

FALL FEST & HAY RIDE Sunday, October 2 12:00 - 3:00 PM

Jeff and Jeanne Theis Family Farm
15371 County Road #21, Watkins, MN

Enjoy autumn with a hayride, potluck yard games and activities...all while connecting with other families affected by seizures! Beverages and snacks provided. RSVP to Lori by September 28.

SEIZURE SMART COMMUNITIES WORKSHOP

Thursday, October 13 6:30 – 8:00 PM

Ridgewater College Auditorium, Room 270
2 Century Ave SE, Hutchinson, MN

Hutchinson is a 2011 Seizure Smart Community whose workshop features Dr. Kathleen Rieke of Centra Care Clinic Neurology, discussing seizure recognition & response and epilepsy.

PARENT CONNECT Thursday, November 3 6:30-8:00 PM

Epilepsy Foundation
2229 Roosevelt Road, St. Cloud, MN

Have a child with seizures? Connect with other parents facing similar issues and get connected to resources in our newly-formed parents group. Please RSVP to Lori.

ADULT CONNECT Meets the 2nd Thursday of each month October 13, November 10, December 8 5:30 - 7:00 PM

Essentia Health (SMDC)
400 East Third Street, Duluth, MN

Join us in the Minnesota Room across from the 1st floor cafeteria. October 13: open forum lead by facilitator Kyah Altieri, November 10: Essentia Health Nutritionist guest speaker. December 8: holiday potluck.

WOMEN'S CONNECT Meets the 4th Wednesday every other month Wednesday, November 16 6:30 - 8:00 PM

St. Luke's Hospital
915 East First Street, Duluth, MN

Our November meeting is one week early to accommodate Thanksgiving. Meet us for a holiday potluck!

SEIZURE SMART COMMUNITY WORKSHOP

Wednesday, November 9 4:30 - 6:00 PM

Sanford Bemidji Medical Center
Education Center/East Entrance
1300 Anne Street NW, Bemidji, MN

Bemidji is a 2011 Seizure Smart Community and offers a workshop featuring Dr. Bala Davuluri, a neurologist at Sanford Health.

Through a partnership with student group "Access for All," pieces from EFM's BRAINSTORMS collection will be displayed at the University of Minnesota Duluth's Multicultural Center throughout the month of November. A reception on Tuesday, November 8 from 4:30-6:00pm is open to the public. Contact Mary for details.

Fargo

PARENT CONNECT Meets the 1st Tuesday of each month October 4, November 1, December 6 7:00-9:00 PM

Pediatric Therapy Partners
2846 Brandt Drive South, Fargo, ND

Parents of children living with epilepsy gather for a time of support and resources. Meetings include time for sharing as well as topical speakers. No childcare provided.

ADULT CONNECT Meets the 1st Monday of month October 3, November 7, December 5 6:00 – 8:00 PM

Sanford South University Campus
Conference Room 1A-3

Adults living with epilepsy discuss pertinent health topics, overall experiences of living with epilepsy and enjoy recreational activities.

SEIZURE SMART COMMUNITIES WORKSHOP Wednesday, October 26 7:00 – 9:00 PM

Lake Region Hospital Conference Room
712 Cascade Street, Fergus Falls, MN

Fergus Falls is a 2011 Seizure Smart Community hosting a workshop that features Dr. Amanda Diamond speaking about epilepsy 101 and current treatments. Refreshments provided.

Rochester

SEIZURE SMART COMMUNITIES WORKSHOP Monday, November 7 6:00 – 8:00 PM

Holiday Inn
2365 43rd Street NW, Owatonna, MN

Owatonna is a 2011 Seizure Smart Community and will host this workshop in the community. Featured speakers are Dr. Wong-Keisel on seizure recognition & response and Dr. Greg Cascino about quality of life for adults with seizures.



1600 University Avenue West, Suite 300
 Saint Paul, MN 55104
 www.efmn.org

Nonprofit Org.
 U.S. Postage
PAID
 Twin Cities MN
 Permit No. 32600

Connect with us!

Sign up for an email version of this newsletter and to receive the latest news and information from the Epilepsy Foundation of Minnesota. Visit www.efmn.org today to connect with us via email.



MIDWEST SEIZURE SMART CONFERENCE 2011

Midwest Seizure Smart Conference

Saturday, October 15th 2011

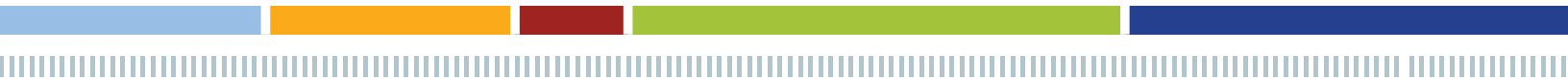
9 am. to 5 p.m.

Sofitel Minneapolis

5601 West 78th Street

Bloomington, MN

Registration \$40 / person – includes continental breakfast & lunch, parking and conference materials. Financial Assistance is available by calling 651-287-2310. Five CEUs are available for school nurses and other healthcare professionals.



Fall Featured Events

Shining Stars Celebration
Saturday, October 1, 2011
Science Museum of Minnesota

This event is free to Shining Stars and their immediate family members. Enjoy admission to the museum, refreshments and a short program.

Creative Arts Program Talent Showcase (Inner Voice, Inner Strength)
Sunday, November 13, 2011
Patrick's Cabaret in Minneapolis

Our third-annual talent showcase features artists affected by seizures. Enjoy BRAINSTORMS artwork on display, live musical performances and light refreshments.